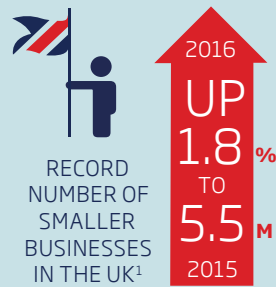


UK smaller
businesses
**continue
to prosper**



**P2P BUSINESS
LENDING UP**
30% IN 2016⁴

Supported by
**growing &
diversified**
financial markets

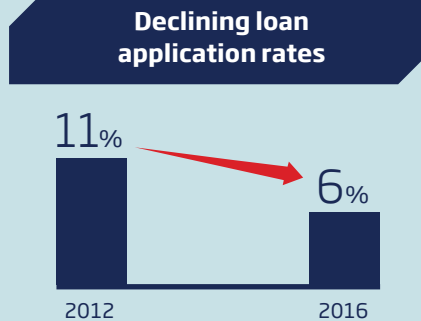
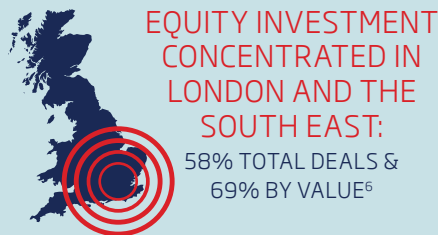
**9 CONSECUTIVE
QUARTERS**

OF POSITIVE NET BANK LENDING
TO SMALLER BUSINESSES⁵



However
**market issues
remain**

**Regional imbalance
in scale-up funding**



6% OF SMALLER
BUSINESSES APPLIED FOR
**A NEW LOAN OR
OVERDRAFT FACILITY**
IN PREVIOUS 12 MONTHS
COMPARED TO 11% IN 2012⁷



**38% OF SMALLER BUSINESSES STILL
WENT DIRECTLY TO
THEIR MAIN BANK**
WHEN FIRST IDENTIFYING
A FINANCING NEED⁸

**Growth in awareness of different
finance products is slowing**

**The British Business Bank is
helping to increase
diversity of supply
& awareness**
across the UK

1 Supporting scale-ups

£400M

**ADDITIONAL
VENTURE CAPITAL
FUNDING** ANNOUNCED
TO SUPPORT SMALLER
BUSINESSES TO
SCALE-UP

£650M



**NORTHERN POWERHOUSE
INVESTMENT FUND &
MIDLANDS ENGINE
INVESTMENT FUND** WILL
PROVIDE A TOTAL OF **£650M**
TO REGIONS OUTSIDE THE
SOUTH EAST

40%

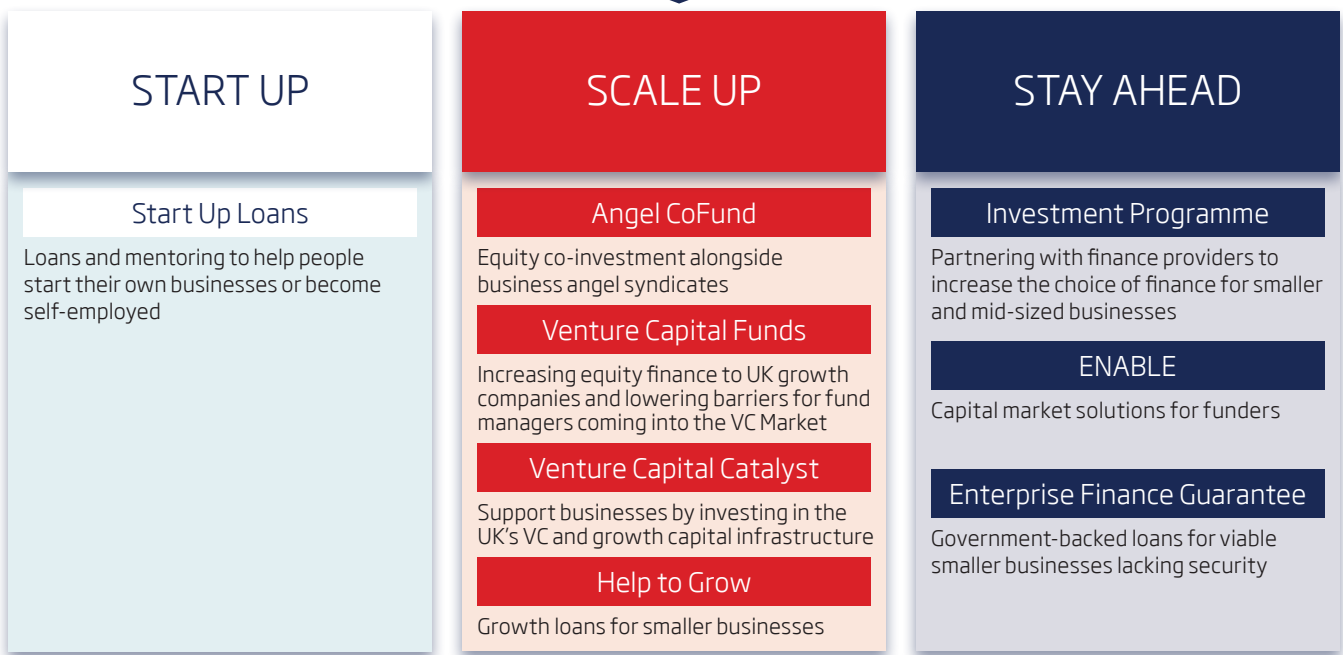
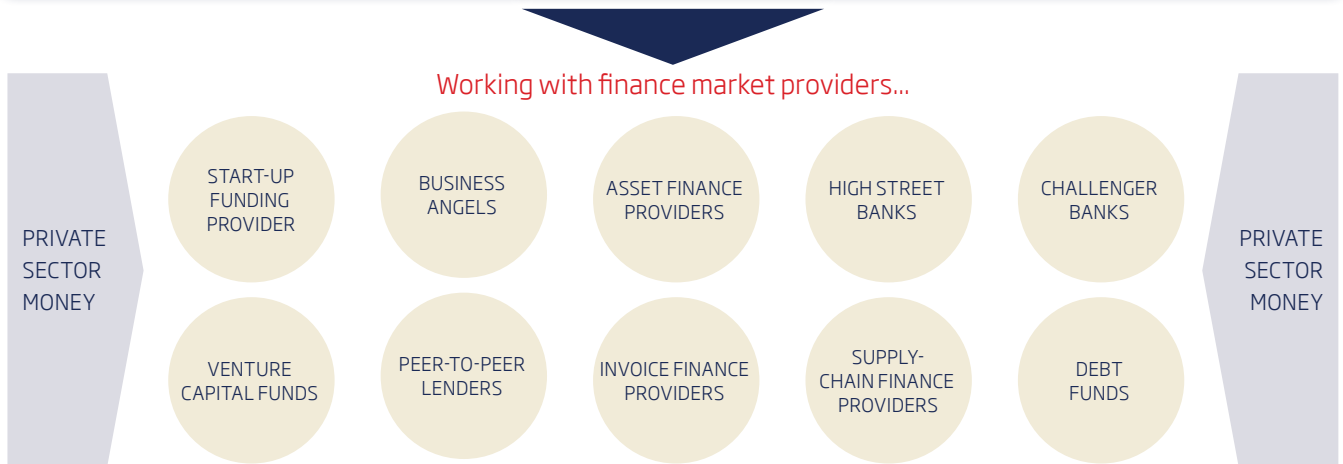
OF WHICH
WILL BE EQUITY
FINANCE

2 Closing regional imbalances

**3 Raising awareness
and confidence**

OUR BUSINESS FINANCE GUIDE PUBLISHED WITH
THE ICAEW OUTLINES THE FINANCE OPTIONS
AVAILABLE TO BUSINESSES AT ALL STAGES
www.thebusinessfinanceguide.co.uk/bbb

HOW WE OPERATE



RESULTING IN INCREASED BUSINESS INVESTMENT, GROWTH AND JOBS