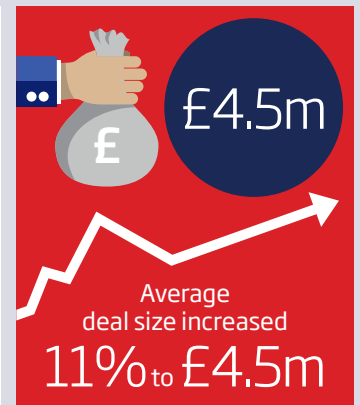
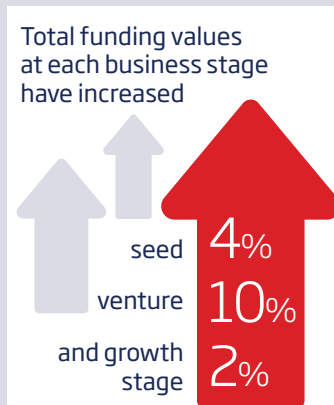
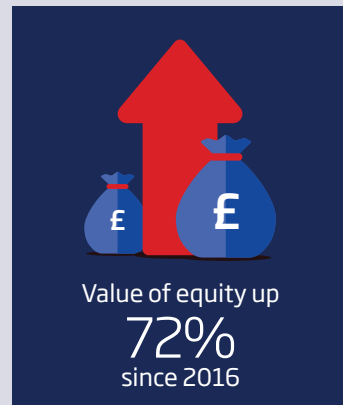


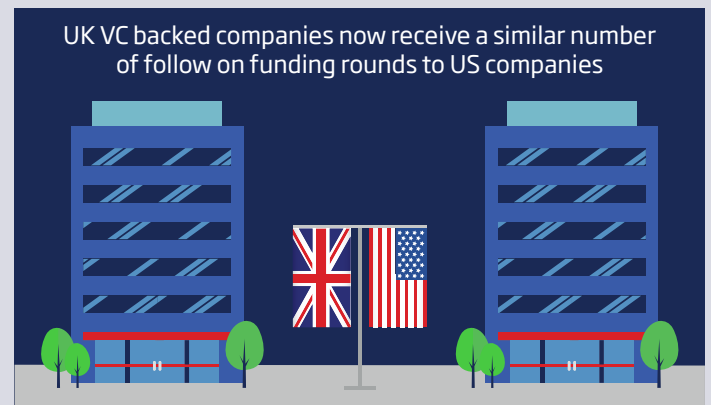
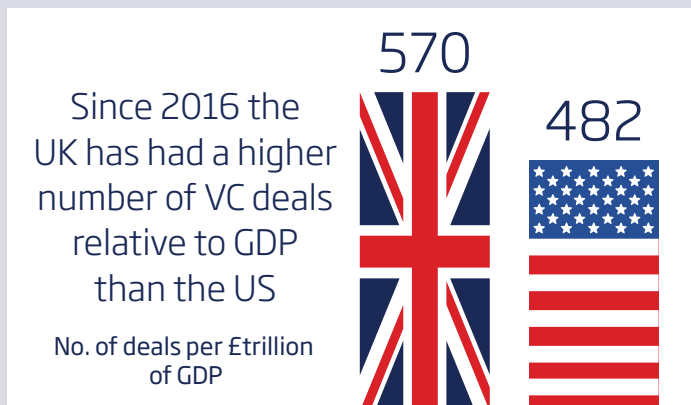
# SMALL BUSINESS EQUITY TRACKER 2019



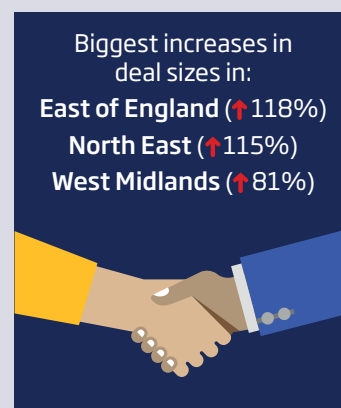
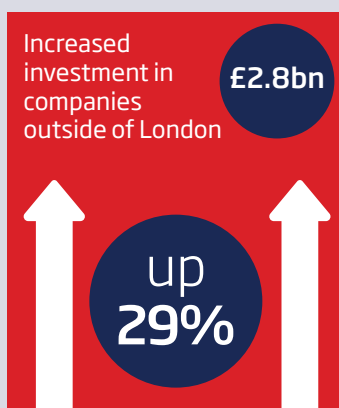
EQUITY INVESTMENT REACHED RECORD LEVELS IN 2018 - DEAL VALUES ARE UP, DESPITE NUMBER OF DEALS FALLING



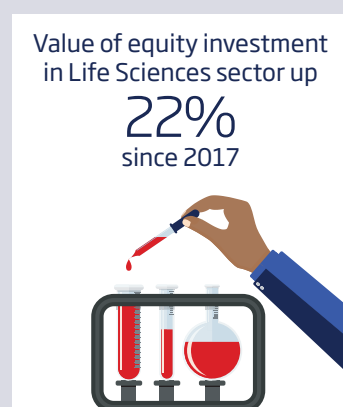
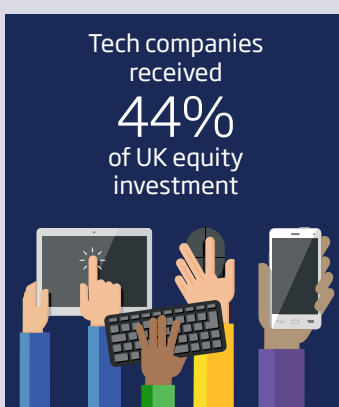
THE UK VC SECTOR HAS GROWN MORE QUICKLY THAN THE US - FOR THE FIRST TIME EVER



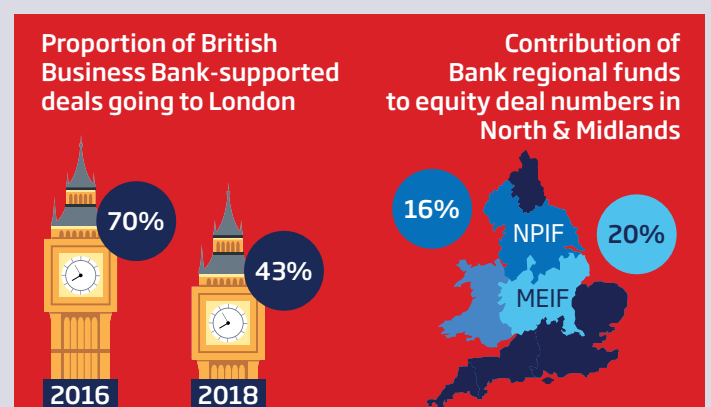
LONDON'S DOMINANCE OF THE UK SMALL BUSINESSES EQUITY FINANCE MARKET IS DECREASING



## SECTOR FOCUS

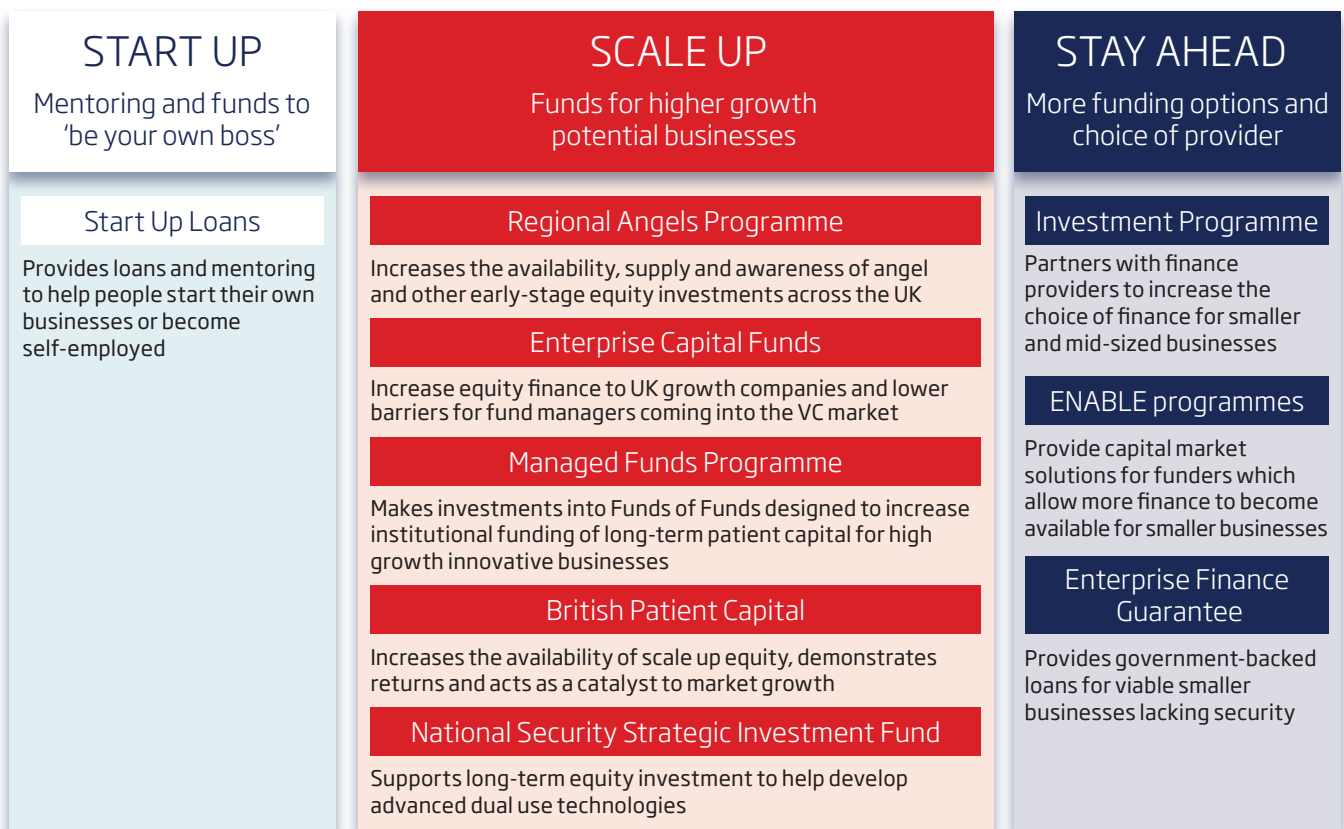
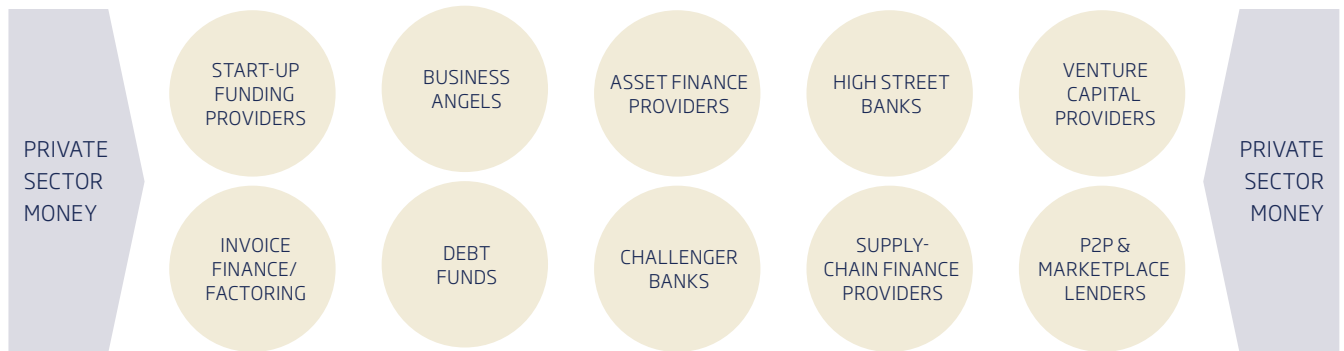


## THE BANK'S REGIONAL IMPACT INCREASES



NPIF and MEIF are the Northern Powerhouse and Midlands Engine Investment Funds

# HOW WE OPERATE



We deliver debt and equity funding to specific regions through our regional funds: the **Northern Powerhouse**, **Midlands Engine** and **Cornwall & Isles of Scilly Investment Funds**. We enhance local business finance ecosystems through our **UK Network**. We encourage and enable SMEs to seek the finance best suited to their needs through our **Business Finance Guide** and online **Finance Hub**.

**RESULTING IN INCREASED BUSINESS INVESTMENT, GROWTH AND JOBS**

