

UK Business Angels Report 2020

Current climate for UK business angels¹

57%

made an investment between April and July 2020



46%

expect to make new investments during 2020/2021



72%

are confident about the future growth in value of their portfolio



54%

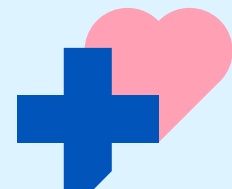
had greater engagement with their portfolio companies during the current pandemic



Top investment sectors¹

31%

Healthcare



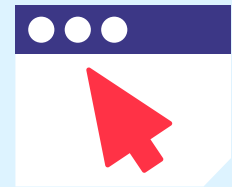
26%

Biotech, life sciences and pharmaceuticals



24%

Software as a service



19%

Fintech



Current challenges and barriers facing angel investors¹

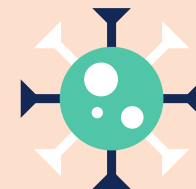
45%

said economic uncertainty



32%

said the impact of Covid-19



26%

said selecting / finding the right opportunities



26%

said lack of liquidity / exit opportunities



The profile of UK business angels²

21%

are over 65



85%

are over 45



53%

have more than 5 years investment experience



£45k

Median initial investment³



Median follow on investment³

£25k

13%

are women



Where business angels are based⁴

1%

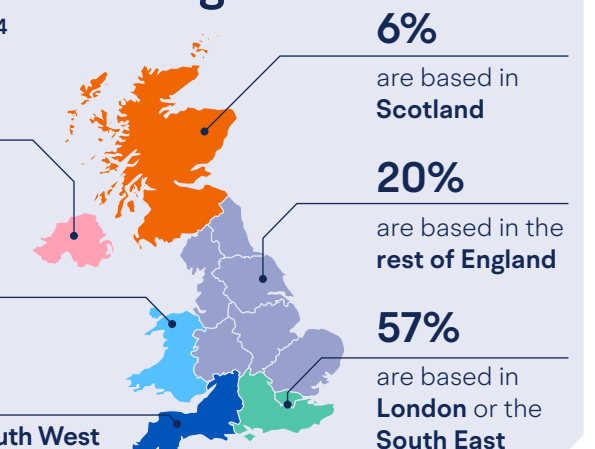
are based in Northern Ireland

1%

are based in Wales

8%

are based in the South West



¹ based on responses to our business angels survey conducted Apr-July 2020

² based on responses to our business angels survey conducted Sept-Nov 2019

³ for the tax year 2018/19

⁴ 7% are based outside of the UK or prefer not to say